

The background of the slide is a light blue color, decorated with numerous small, irregular dots in orange, green, and blue. A dark blue rectangular box with a thin white border is positioned on the right side of the slide. Inside this box, the title and authors' names are written in white and dark blue text.

Organizational Adaptations During COVID- 19 Pandemic

Jill Hamilton

Ronda Horstman

Alison Draves



Navigating Eligibility Changes during COVID

Ronda Horstman

CDC Updates



```
graph TD; A[CDC Updates] --> B[FDA Guidance]; B --> C[Developments, Statistical Data, and Published studies]; C --> D[AATB Bulletins];
```

FDA Guidance

Developments, Statistical
Data, and Published studies

AATB Bulletins

Navigating
Changing
Information

AATB Bulletins

AATB Bulletin #20-3

• 1/31/2020

AATB Bulletin #20-7

• 2/25/2020

AATB Bulletin #20-8

• 3/04/2020

AATB Bulletin #20-9

• 3/14/2020

AATB Bulletin #20-10

• 4/02/2020

AATB Bulletin #20-11

• 4/23/2020

AATB Bulletin #20-14

• 8/12/2020

Navigating the Change Process

Evaluation of
Information

Implementation
of Changes and
Planned
Deviations

Training

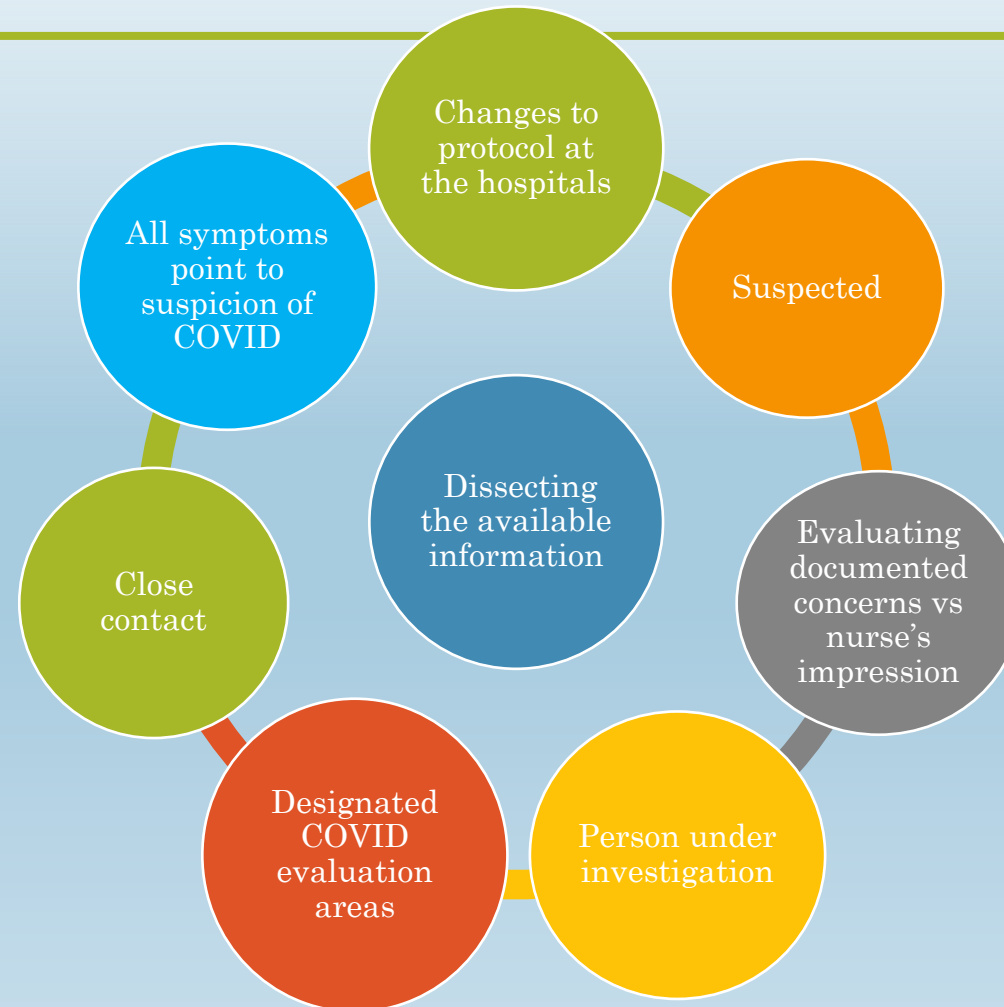
Notification to
Customers



Implementing Screening Changes

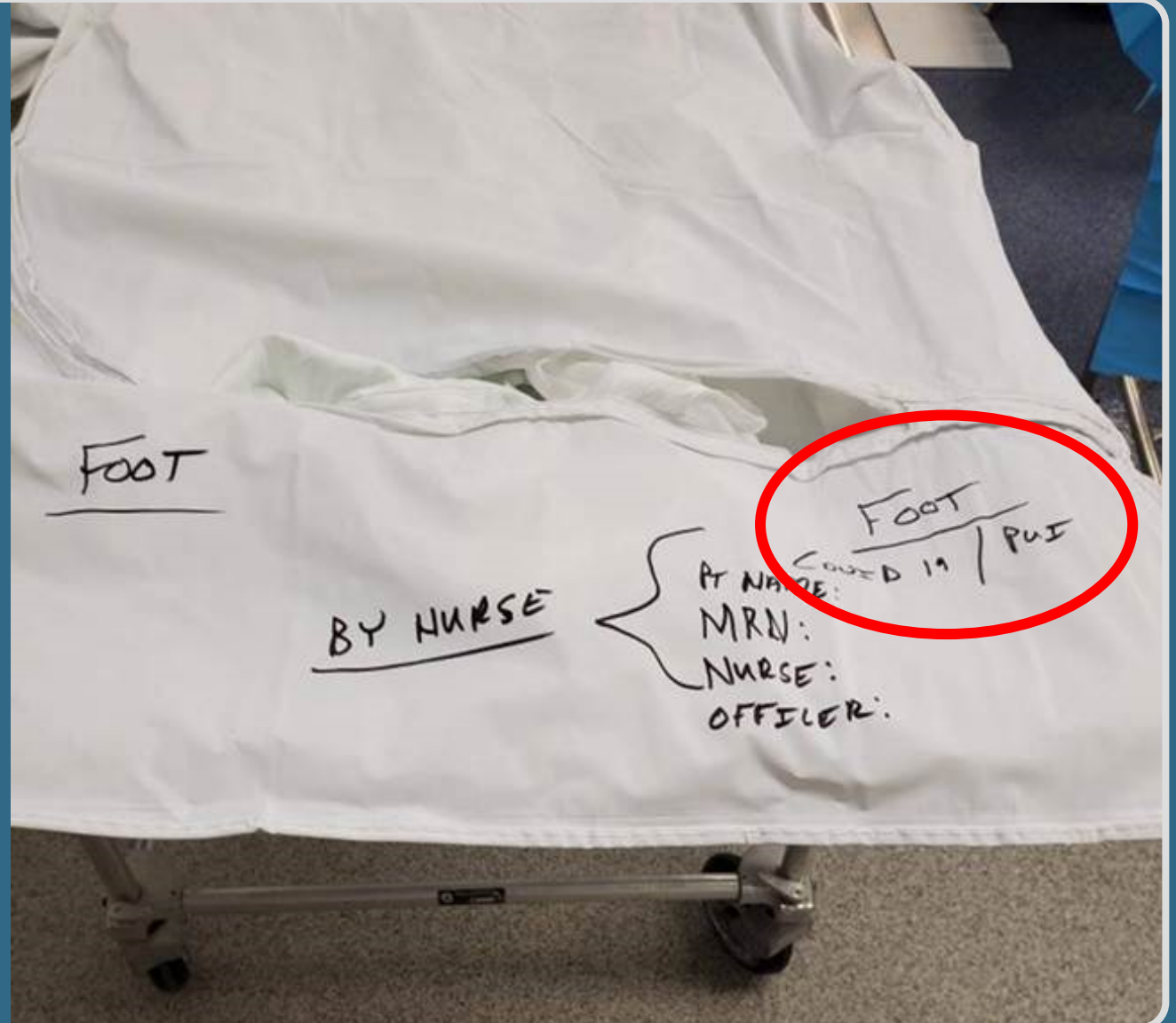
Alison Draves

Hospital Referrals



Body Bag Documentation

Determine why bag is
being marked



Additional Screening Questions

Was the patient tested for COVID?

- If yes:
 - What are the results (reactive, negative, indeterminate, pending)
 - What was the date of the test? (Requirements vary for processors)
- If No or outside of the time frame: the patient will be tested at recovery

Why was the patient tested?

- What symptoms did the patient have? Are all patients being tested?

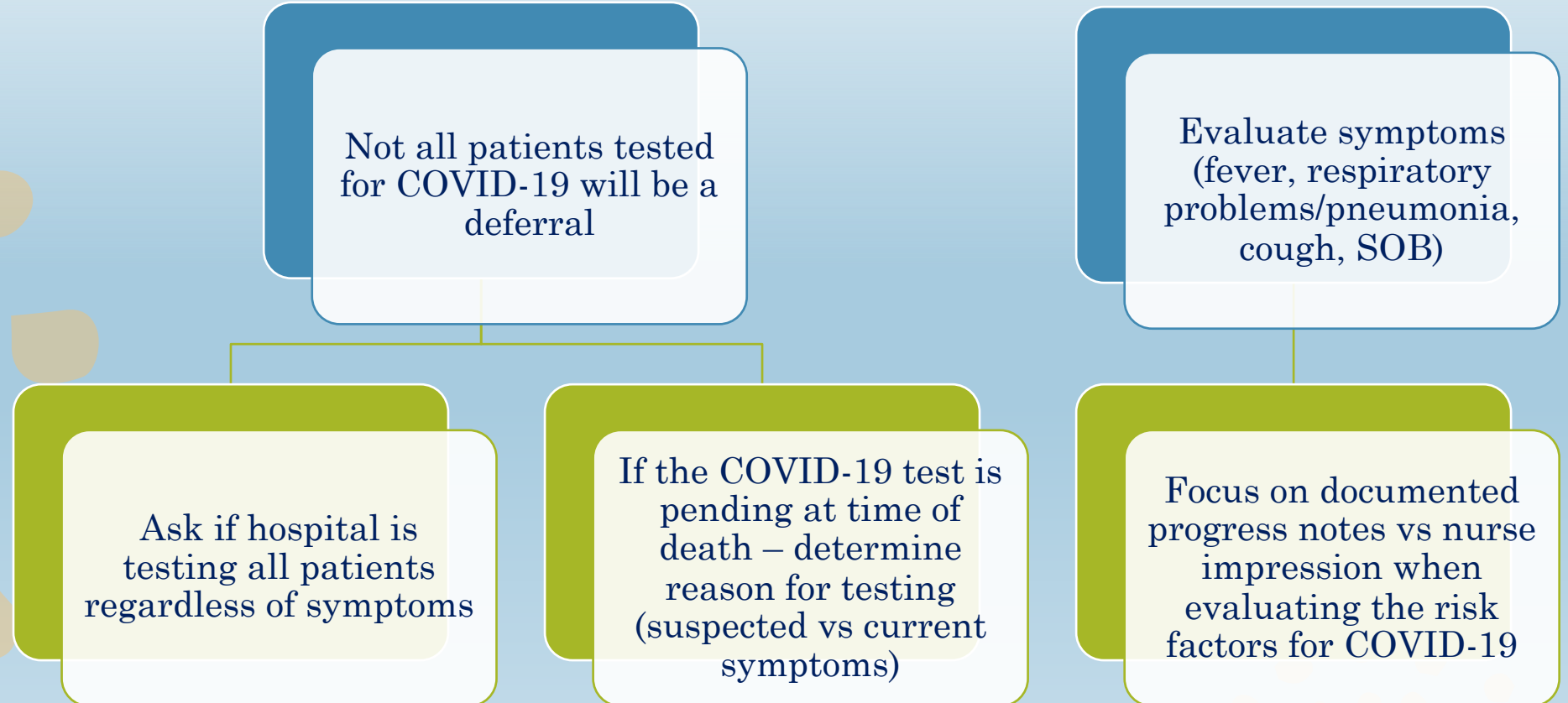
If symptomatic: were they placed in isolation?

- If they were placed in isolation for symptoms or diagnosis of COVID-19 this would be a deferral

Is there a dedicated COVID evaluation area?

- Many hospitals are isolating patients at increased risk on dedicated units for COVID-19 or separate areas of the ER – this can help determine the likelihood they were under suspicion

Screening Considerations



Changes to Screening-Close Contact in the Hospital Setting

If a person is on a designated COVID-19 unit regardless of test results (pending/negative)

If a person is on a designated COVID-19 unit regardless of test results AND the pt is symptomatic (pending/negative)

If a person is on the same unit as a patient who has suspected/confirmed COVID-19

If a person is on the same unit as a patient who has suspected/confirmed COVID-19 AND the pt is symptomatic

If a person is on the same floor of the hospital, but not the same unit -> ACCEPT

If a person has been in close contact with
(lived with, taken care of, etc.) a
suspected/confirmed COVID patient in
the last 28 days → **DEFER**



Medical professional who took care of
COVID-19 patients and wore the proper
PPE and were NOT symptomatic at the
time of death → **ACCEPT**

Caregivers and
Medical
Professionals

Takeaways

Gather Information

Obtain as much information as possible about symptoms (cough, respiratory issues, fever, pneumonia)

Evaluate

Screen the facts (documented concerns, progress notes, symptoms)
Determine reason for COVID-19 testing and obtain results whenever possible

Adapt

Information changes quickly, be prepared to adapt



Implementation Challenges

Jill Hamilton

Challenges

Change Management

- Frequency of changes
- Crisis Management
- Remote Workforce
- CDC website changes
 - Symptoms
 - Travel map/category changes
- PUI definition

Donor Screening Questions Recommendations

- COVID Addendum not standardized
- Processors had differing questions for the DRAI
- Review of the questions used by each agency
- Electronic Chart Systems
 - Documentation within records
- Frequency of changes

Donor Testing

- Testing not required
- Implemented by processors
- Different requirements for the test time frames

Donor Testing FAQ

Test Availability

- Would there be enough test kits available for donors?
- Should donors be tested when testing was limited?
- When is the blood testing going to be available?

Collecting the swab

- Who was performing the testing?
- How should the swab be collected?
- When should the test be collected?

Test requirements

- When was the test collected?
- What happens if there is a bloody swab?
- What does an invalid or not tested mean for donor disposition?

Questions?

—

